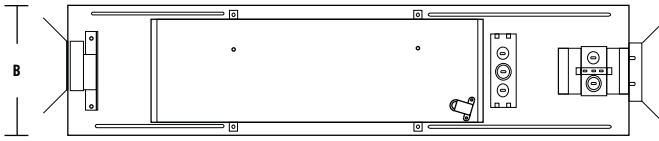


Multilume LED

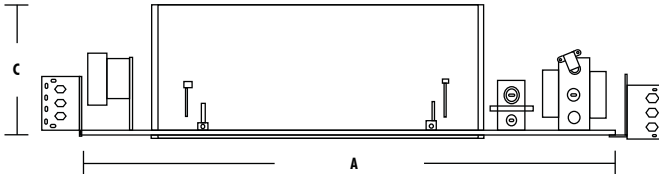
DIMENSIONS (DL61)

A: LENGTH	13.5"
B: WIDTH	7.5"
C: DEPTH	6.4"
FACEPLATE:	8.1" X 8.1"
CUTOUT:	7" Diameter



DIMENSIONS (DL62)

A: LENGTH	31.0"
B: WIDTH	9.1"
C: DEPTH	10.0"
FACEPLATE:	15.6" X 8.1"
CUTOUT:	14.13" X 7"



DIMENSIONS (DL63)

A: LENGTH	41.8"
B: WIDTH	9.1"
C: DEPTH	10.0"
FACEPLATE:	22.1" X 8.1"
CUTOUT:	20.75" X 7"



Spot (15°)

Distance to Floor	Beam Diameter (50% CBCP)	Foot-candles on floor
6'	6'	90
9'	8'	39
12'	23'	24
15'	27'	15

Flood (35°)

Distance to Floor	Beam Diameter (50% CBCP)	Foot-candles on floor
6'	15'	43
9'	24'	19
12'	33'	11
15'	35'	7

WIDE Flood (65°)

Distance to Floor	Beam Diameter (50% CBCP)	Foot-candles on floor
6'	29'	25
9'	41'	11
12'	53'	7
15'	68'	4

Perfect for retail and other areas that require multiple adjustable illumination in a single unit.

Face plate is made of Heavy gauge 2.5mm steel. Powder coat finish in white or black.

Face plate covers ceiling opening to provide for a clean unobtrusive look in line with the ceiling. Each heavy duty die-cast gimbal rotates 359° degree and tilts 40° degrees. Front lamp loading allows for easy lamp maintenance. Adjustable lamp bracket allows for the

Can be installed to Sheet Rock or Suspended ceiling applications.

Driver: Electronic Direct Current U.L. Listed driver mounted away from LED Array for cool operation and end-of-life modularity. 0-10V Dimming is optional. For ELV or Dali Dimming please contact factory.

Power Connection: LED heat sinked lamp module is replaceable via on board quick disconnect terminal. No tools required.

Optics: Quality binned LEDs offering up to 90+ CRI with various beam control options. Spot, Narrow Flood, Flood and Wide Flood.

Thermal Management: Heat dissipation facilitated by integral aluminum heat sink to maximize heat rejection.

Listings: ETL listed to UL Standards.

2016.07.28

Example: DL62LED-10-NFL-3K-CC

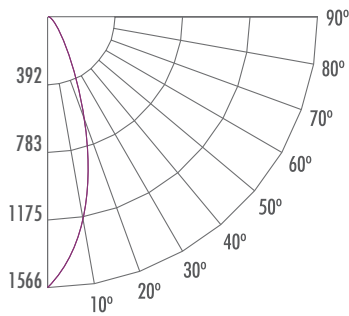
Ordering	NUMBER OF LAMPS	WATTAGE	BEAM SPREAD	TEMP	VOLTAGE	OPTIONS
DL6	1LED 1-Lamp 2LED 2-Lamp 3LED 3-Lamp 4LED 4-Lamp	-17: 17W	-SP: 15° -FL: 35° -WFL: 65°	-3K: 3,000K, 80 CRI -3K90: 3,000K, 90 CRI	Blank: 120V/277V D: 120V/277V Dimming	-CC Custom Color -GU24

Lamp: 10W - 15W	MultiLume LED
Total Rated Fixture Lumen : 634.80	IESNA Standard
Total Luminaire Efficacy : 36.38 Lm/W	LM-79-2008
Luminous Diameter : 2.76"	Test # L09111702
Input Power (W) : 17.34	By:
Input Current (Amp) : 0.15	Light Laboratory, Inc.
Color Rendering Index (CRI) : 85.13	17W
Color Temperature : 2,854K	

LED - Performance

DL5 - (FL) Flood

17W Module, 4000K
 IESNA: LM-63-2002
 Luminaire Lumens : 1756.8 per module
 CRI: 80+

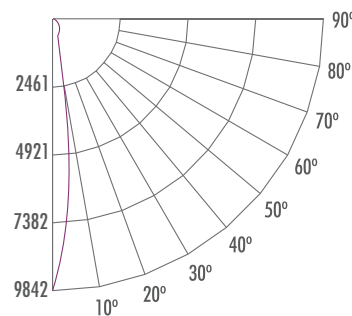


Luminance (cd/sq.m)			
Angle	Average 0°	Average 45°	Average 90°
45°	14050	14563	15511
55°	6965	6839	8055
65°	4091	3705	4822
75°	1220	1152	1064
85°	0	0	0

Zonal Lumen Summary			
Zone	Lumens	%Lamp	%Fixt
0 - 30	601.87	34.3	55.3
0 - 40	814.14	46.3	74.8
0 - 60	1034.35	58.9	95
0 - 90	1088.27	61.9	100
0 - 180	1088.27	61.9	100

DL5 (SP) - Spot

17W Module, 4000K
 IESNA: LM-63-2002
 Luminaire Lumens : 1756 per module
 CRI: 80+

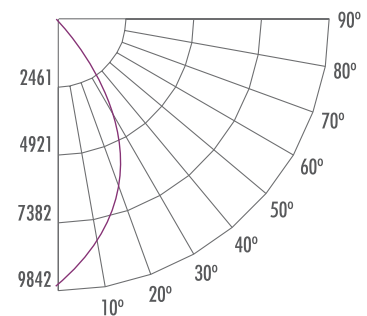


Luminance (cd/sq.m)			
Angle	Average 0°	Average 45°	Average 90°
45°	0	0	0
55°	0	0	0
65°	0	0	0
75°	0	0	0
85°	0	0	0

Zonal Lumen Summary			
Zone	Lumens	%Lamp	%Fixt
0 - 30	872.68	49.7	54.9
0 - 40	1165.45	66.4	73.3
0 - 60	1499.69	85.4	94.4
0 - 90	1589.42	90.5	100
0 - 180	1589.42	90.5	100

DL5 (WFL) - Wide Flood

17W Module, 4000K
 IESNA: LM-63-2002
 Luminaire Lumens : 176257.com per module
 CRI: 80+



Luminance (cd/sq.m)			
Angle	Average 0°	Average 45°	Average 90°
45°	20856	16561	18466
55°	12382	9916	11411
65°	8641	6969	6938
75°	2016	1391	2681
85°	119	0	283

Zonal Lumen Summary			
Zone	Lumens	%Lamp	%Fixt
0 - 30	551.55	31.3	47
0 - 40	794.58	45.1	67.7
0 - 60	1085.55	61.6	92.5
0 - 90	1174.17	66.9	100
0 - 180	1174.17	66.9	100

2016.07.28