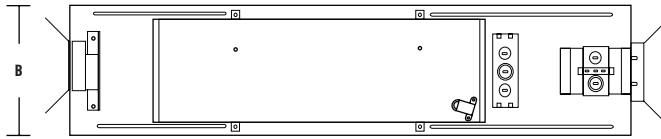


PAR30 Multilume Line Voltage

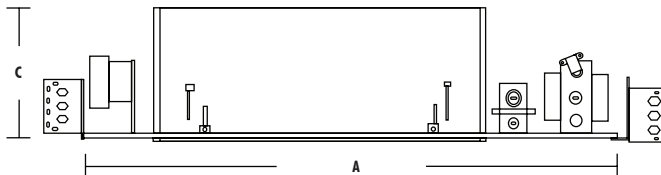
DIMENSIONS (DL61M)

A: LENGTH	13.5"
B: WIDTH	7.5"
C: DEPTH	6.4"
FACEPLATE:	8.1" X 8.1"
CUTOUT:	7" Diameter



DIMENSIONS (DL62M)

A: LENGTH	31.0"
B: WIDTH	9.1"
C: DEPTH	10.0"
FACEPLATE:	15.6" X 8.1"
CUTOUT:	14.13" X 7"



DIMENSIONS (DL63M)

A: LENGTH	41.8"
B: WIDTH	9.1"
C: DEPTH	10.0"
FACEPLATE:	22.1" X 8.1"
CUTOUT:	20.75" X 7"

DIMENSIONS (DL64M)

A: LENGTH	48.2"
B: WIDTH	9.1"
C: DEPTH	10.0"
FACEPLATE:	28.7" X 8.1"
CUTOUT:	27.4" X 7"



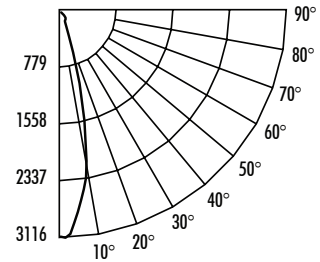
Perfect for retail and other areas that require multiple adjustable illumination from a single unit.

Face plate is made of Heavy gauge 2.5mm steel. Powder coat finish in white or black.

Face plate covers ceiling opening to provide for a clean unobtrusive look in line with the ceiling. Each heavy duty die-cast gimbal rotates 359° degrees and tilts 23° degrees. Front lamp loading allows for easy lamp maintenance. Adjustable lamp bracket allows for the

Can be installed to Sheet Rock or Suspended ceiling applications.

UL & cUL Listed.



ZONAL LUMEN SUMMARY

ZONE	LUMENS	%LAMP	%FIXT
0-30	612.02	59.40	69.20
0-40	686.24	66.60	77.60
0-60	817.94	79.40	92.50
0-90	884.57	85.90	100.00
0-180	884.57	85.90	100.00

GE LIGHTING

Lamp: (1)75W PAR30
 Total Rated Lamp Lumens : 1030
 Total Luminaire Efficiency : 85.9%
 CIE Type: Direct
 Spacing Ratio: 0.44

File Name: PAR30-75WIES_18057R.IES
 IESNA: LM-63-1995

Candle Power Distribution

Beam Angle	Candle Power
0°	1192
5	1201
10	1199
15	1172
20	1116
25	1002
30	862
35	681
40	461
45	265
50	105
55	27
60	6
65	1
70	0
75	0
80	0
85	0
90	0

2009.3.20

Example: DL63I-P30-WC

Ordering	NUMBER OF LAMPS	WATTAGE	OPTIONS
DL6	11 1-Lamp 21 2-Lamp 31 3-Lamp 41 4-Lamp	-P30 (75W PAR30)	-CC Custom Color -WC White Color